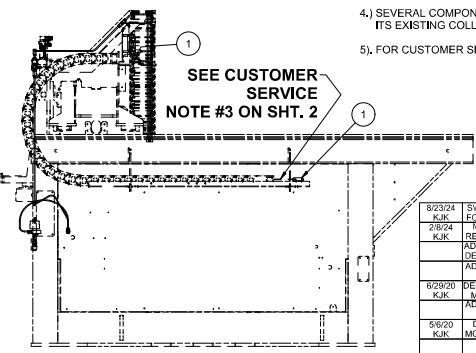
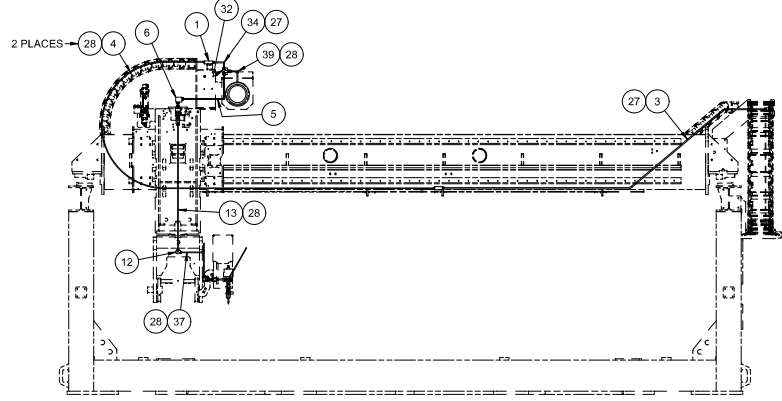


SEE CUSTOMER SERVICE NOTE #1 ON SHT. 2



- NOTES:**
- 1.) "BLUE GOOP" TO BE APPLIED TO ALL HIGH PRESSURE FITTINGS.
 - 2.) HIGH PRESSURE FITTING TORQUE SPECS ARE TO BE:
 - 1/4" FITTINGS: 15-25 FT-LBS (20-34 Nm)
 - 3/8" FITTINGS: 35-45 FT-LBS (47-60 Nm)
 - 3.) BALLOON ITEMS WITH THE 8-DIGIT PN'S ARE SERVICE PARTS ONLY, AND DO NOT CONTRIBUTE TO THE BOM FOR THIS SCHEMATIC.
 - 4.) SEVERAL COMPONENTS REQUIRE DISASSEMBLY TO REPLACE ITS EXISTING COLLAR AND GLAND W/ AN ANTI-VIBRATION ASSY.
 - 5.) FOR CUSTOMER SERVICE NOTES SEE SHEET 2.

40	70000755	HP ADAPTOR, 3/8M X 1/4F		1
39	94087	HP GAUGE LINE, 1/4 INCH		1
38	70000773	GAUGE, WATER, 0-80,000 PSI		1
37	97001	C-AXIS TO A-AXIS HP LINE, 1/4 INCH		1
36				
35				
34	94096	R&F HP LINE SHORT, 3/8 INCH		1
33	70000911	HP PLUG 3/8"		1
32	70000774	HP TEE 3/8"		1
31				
30				
29				
28	70000785	FLEXIBLE METAL HOSE, 1/4 ID	750,000 in	1
27	70000786	FLEXIBLE METAL HOSE, 3/8 ID	180,000 in	1
26	70003965	REDUCER COUPLING 4F6F		1
25	70008044	3/8" INLINE SWIVEL		1
24	70003271	DIALINE CUTTING HEAD ASSEMBLY		1
23	70003270	ACCUVALVE ASSY		1
22	70003272	ACCUVALVE MOUNT		1
21	94086	A-AXIS HP LINE, 1/4 INCH		1
20	70002373	1/4" HP COUPLER		1
19	70008045	90 DEG 1/4" HP SWIVEL		1
18	70003291	1/4" HP GLAND		10
17	70003290	1/4" HP COLLAR		10
16				
15				
14				
13	94089	C-AXIS HP LINE, 1/4 INCH		1
12	70000756	ELBOW, 1/4" HP		1
11	70009867	3/8" ANTI-VIBRATION ASSEMBLY		1
10	70009868	1/4" ANTI-VIBRATION ASSEMBLY		5
9	70003330	3/8" HP COLLAR		5
8	70003331	3/8" HP GLAND		5
7	7001490	TUBE, 3/8 HP, 3' LG		1
6	70000781	ELBOW, 3/8 HP		1
5	93444	R&F HP LINE LONG, 3/8 INCH		1
4	93443	X-TRAV HP LINE, 1/4 INCH		2
3	93442	BRIDGE HP LINE, 3/8 INCH		1
2				
1	70003284	3/8" TO DUAL 1/4" HP MANIFOLD		4
NO	PART NO	DESCRIPTION	SIZE	QTY

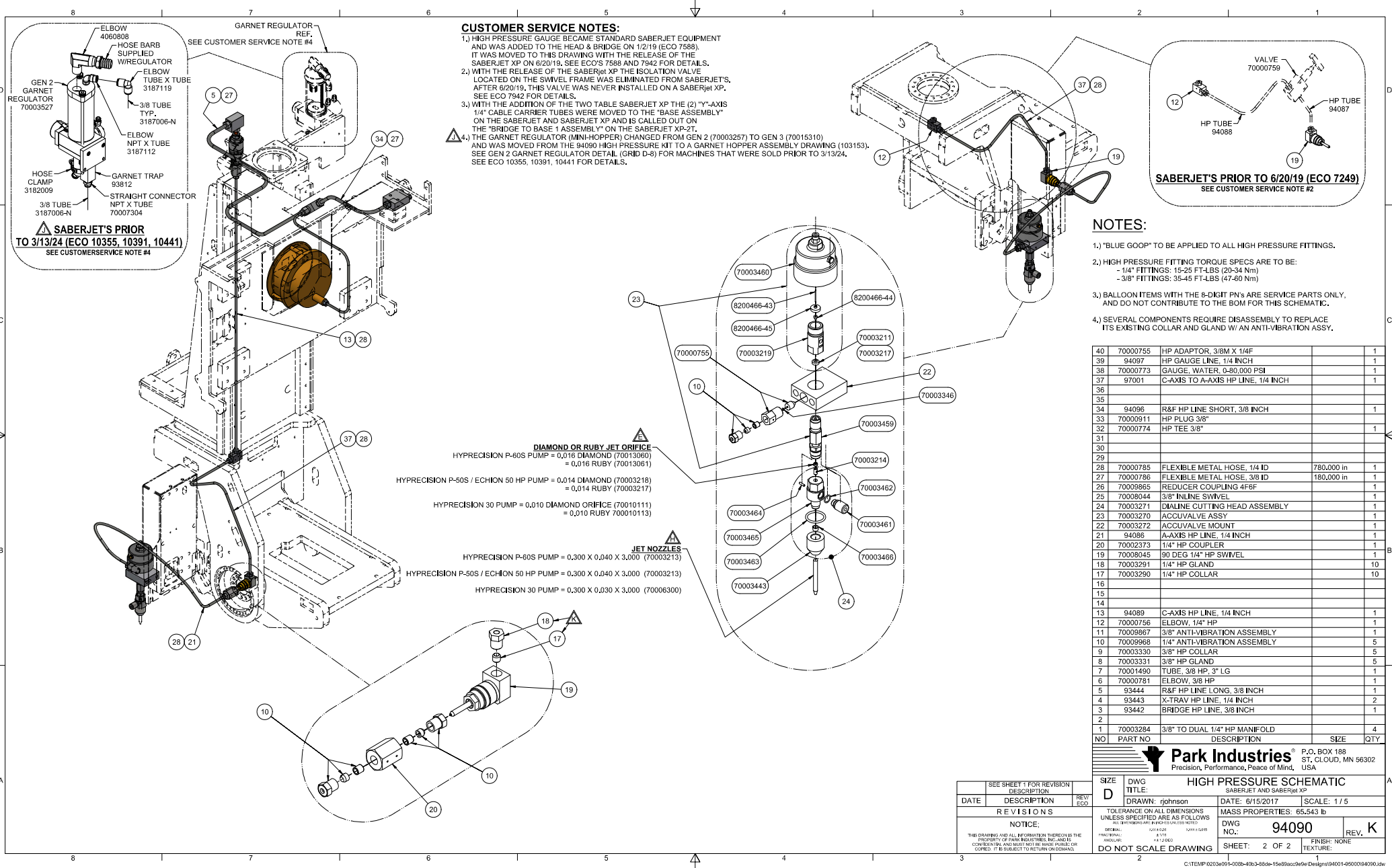
8/23/24	KJK	SHAW BALLOON CALL OUTS FOR 70003290 AND 70003291	K	10669
2/8/24	KJK	MOVED ITEM 35 (GARNET REG) TO MFG. PRINT 101563	J	10355
		ADDED GARNET REGULATOR	J	10355
		DETAIL ON SHT. 2 (GRID L&R)	J	10355
		ADDED CUSTOMER SERVICE NOTE 4 ON SHT. 2	J	10355
8/29/20	KJK	DELETED ITEM 38 (70003007) MOVED TO HP PUMP DWG.	H	8747
		ADDED NOZZLE REFERENCE NOTE (SHT. 2)	H	8747
5/8/20	KJK	DELETED ITEM 2 (93441) MOVED TO BASE ASSEMBLY.	G	8646
		ADDED ITEM 40.	G	8646
3/10/20	KJK	ADDED SERVICE NOTE 3 (100 FT. OF 70006180)	F	8646
6/19/18	KJK	REMOVED HP ORIFICE NET FROM 0.015 TO 0.018	E	8132
6/20/19	KJK	DELETED HP ISOLATION VALVE ITEM 15 (70000759) AND CONNECTING TUBES	D	7942
		DELETED ITEMS 29 (70010111) AND 31 (70003349)	D	7942
		ADDED ITEM 27, 35 AND 38	D	7942
		ITEM 28 QTY WAS 52	D	7942
		ITEM 17 AND 18 QTY WAS 30	D	7942
		ADDED CUST. SERV. NOTES	D	7942
3/15/19	KJK	ADDED ITEM 35 AND 36	C	7670
6/19/18	KJK	TEMP. REMOVAL OF ITEM 35	B	7262
		(70003297) AND 36 (70006180)	B	7262
5/24/18	KJK	ADDED ITEM 35 AND 36	A	7262
		(SEE ECR 1942)	A	7262

DATE	DESCRIPTION	REV
		ECO

Park Industries P.O. BOX 188
ST. CLOUD, MN 56302
USA

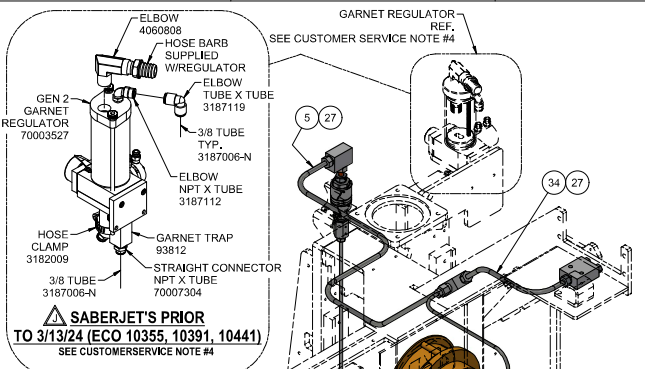
High Pressure Schematic
SABERJET AND SABERJET XP

SIZE: **D** DWG TITLE: **HIGH PRESSURE SCHEMATIC** DATE: 6/15/2017 SCALE: 1/20
 DRAWN: rjohnson DATE: 6/15/2017 MASS PROPERTIES: 65.543 lb
 CHECKED: JPH/2016 DATE: 6/15/2016
 DESIGNED: JPH/2016 DATE: 6/15/2016
 DO NOT SCALE DRAWING SHEET: 1 OF 2 FINISH: NONE TEXTURE:

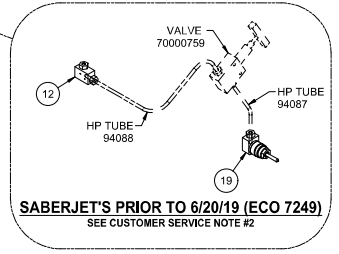


CUSTOMER SERVICE NOTES:

- 1.) HIGH PRESSURE GAUGE BECAME STANDARD SABERJET EQUIPMENT AND WAS ADDED TO THE HEAD & BRIDGE ON 1/2/19 (ECO 7588). IT WAS MOVED TO THIS DRAWING WITH THE RELEASE OF THE SABERJET XP ON 6/20/19. SEE ECO'S 7588 AND 7942 FOR DETAILS.
- 2.) WITH THE RELEASE OF THE SABERJET XP THE ISOLATION VALVE LOCATED ON THE SWIVEL FRAME WAS ELIMINATED FROM SABERJET'S. AFTER 6/20/19, THIS VALVE WAS NEVER INSTALLED ON A SABERJET XP. SEE ECO 7942 FOR DETAILS.
- 3.) WITH THE ADDITION OF THE TWO TABLE SABERJET XP THE (2) "Y"-AXIS 1/4" CABLE CARRIER TUBES WERE MOVED TO THE "BASE ASSEMBLY" ON THE SABERJET AND SABERJET XP AND IS CALLED OUT ON THE "BRIDGE TO BASE 1 ASSEMBLY" ON THE SABERJET XP-2T.
- 4.) THE GARNET REGULATOR (MINI-HOPPER) CHANGED FROM GEN 2 (70003257) TO GEN 3 (70015310) AND WAS MOVED FROM THE 94090 HIGH PRESSURE KIT TO A GARNET HOPPER ASSEMBLY DRAWING (103153). SEE GEN 2 GARNET REGULATOR DETAIL (GRID D-5) FOR MACHINES THAT WERE SOLD PRIOR TO 3/13/24. SEE ECO 10355, 10391, 10441 FOR DETAILS.



△ SABERJET'S PRIOR TO 3/13/24 (ECO 10355, 10391, 10441)
SEE CUSTOMERSERVICE NOTE #4



SABERJET'S PRIOR TO 6/20/19 (ECO 7249)
SEE CUSTOMER SERVICE NOTE #2

NOTES:

- 1.) "BLUE GOOP" TO BE APPLIED TO ALL HIGH PRESSURE FITTINGS.
- 2.) HIGH PRESSURE FITTING TORQUE SPECS ARE TO BE:
- 1/4" FITTINGS: 15-25 FT-LBS (20-34 Nm)
- 3/8" FITTINGS: 35-45 FT-LBS (47-60 Nm)
- 3.) BALLOON ITEMS WITH THE 8-DIGIT P/N'S ARE SERVICE PARTS ONLY, AND DO NOT CONTRIBUTE TO THE BOM FOR THIS SCHEMATIC.
- 4.) SEVERAL COMPONENTS REQUIRE DISASSEMBLY TO REPLACE ITS EXISTING COLLAR AND GLAND W/ AN ANTI-VIBRATION ASSY.

△ DIAMOND OR RUBY JET ORIFICE
HYPRECISION P-60S PUMP = 0,016 DIAMOND (70013060)
= 0,016 RUBY (70013061)
HYPRECISION P-50S / ECHION 50 HP PUMP = 0,014 DIAMOND (70003218)
= 0,014 RUBY (70003217)
HYPRECISION 30 PUMP = 0,010 DIAMOND ORIFICE (70010111)
= 0,010 RUBY (700010113)

△ JET NOZZLES
HYPRECISION P-60S PUMP = 0,300 X 0,040 X 3,000 (70003213)
HYPRECISION P-50S / ECHION 50 HP PUMP = 0,300 X 0,040 X 3,000 (70003213)
HYPRECISION 30 PUMP = 0,300 X 0,030 X 3,000 (70006300)

NO	PART NO	DESCRIPTION	SIZE	QTY
40	70000755	HP ADAPTOR, 3/8M X 1/4F		1
39	94087	HP GAUGE LINE, 1/4 INCH		1
38	70000773	GAUGE, WATER, 0-80,000 PSI		1
37	97001	C-AXIS TO A-AXIS HP LINE, 1/4 INCH		1
36				
35				
34	94096	R&F HP LINE SHORT, 3/8 INCH		1
33	70000911	HP PLUG 3/8"		1
32	70000774	HP TEE 3/8"		1
31				
30				
29				
28	70000785	FLEXIBLE METAL HOSE, 1/4 ID	780,000 in	1
27	70000786	FLEXIBLE METAL HOSE, 3/8 ID	180,000 in	1
26	70009865	REDUCER COUPLING 4F6F		1
25	70008044	3/8" INLINE SWIVEL		1
24	70003271	DIALINE CUTTING HEAD ASSEMBLY		1
23	70003270	ACCUVALVE ASSY		1
22	70003272	ACCUVALVE MOUNT		1
21	94086	A-AXIS HP LINE, 1/4 INCH		1
20	70002373	1/4" HP COUPLER		1
19	70008045	90 DEG 1/4" HP SWIVEL		1
18	70003291	1/4" HP GLAND		10
17	70003290	1/4" HP COLLAR		10
16				
15				
14				
13	94089	C-AXIS HP LINE, 1/4 INCH		1
12	70000756	ELBOW, 1/4" HP		1
11	70009867	3/8" ANTI-VIBRATION ASSEMBLY		1
10	70009868	1/4" ANTI-VIBRATION ASSEMBLY		1
9	70003330	3/8" HP COLLAR		5
8	70003331	3/8" HP GLAND		5
7	70001490	TUBE, 3/8 HP, 3' LG		1
6	70000781	ELBOW, 3/8 HP		1
5	93444	R&F HP LINE LONG, 3/8 INCH		1
4	93443	X-TRAV HP LINE, 1/4 INCH		2
3	93442	BRIDGE HP LINE, 3/8 INCH		1
2				
1	70003284	3/8" TO DUAL 1/4" HP MANIFOLD		4
NO	PART NO	DESCRIPTION	SIZE	QTY

DATE	DESCRIPTION	REV	ECO
SEE SHEET 1 FOR REVISION DESCRIPTION			
REVISIONS			
NOTICE:			
THIS DRAWING AND ALL INFORMATION THEREON IS THE PROPERTY OF PARK INDUSTRIES, INC. AND IS CONFIDENTIAL. ANALYSIS MUST BE MADE PRIOR TO COPIED. IT IS SUBJECT TO RETURN ON DEMAND.			

SIZE: D	DWG TITLE: HIGH PRESSURE SCHEMATIC	DATE: 6/15/2017	SCALE: 1/5
DRAWN: rjohnson		DATE: 6/15/2017	
UNLESS SPECIFIED ARE AS FOLLOWS		MASS PROPERTIES: 65.543 lb	
DWG NO.: 94090		REV. K	
SHEET: 2 OF 2		FINISH: NONE	
DO NOT SCALE DRAWING		TEXTURE:	

Park Industries P.O. BOX 188
ST. CLOUD, MN 56302
Precision, Performance, Peace of Mind, USA